



HAZLO VERDE

EDUCATIONAL AWARENESS-RAISING PROGRAMME

MISSION #SOMOSLARAÍZ



UNIT

4

REFLECTION DYNAMICS FOR THE 7 SDGs

11 SUSTAINABLE CITIES AND COMMUNITIES



A dirty and polluted city with no parks? The cities and towns of the planet must be environmentally friendly, preventing pollution and deforestation and promoting green sustainable spaces.

SDG 11 DYNAMIC: THE URBAN CONSEQUENCE

Ages

8 to 12.

Click on the video:

Length

45 minutes.

Objectives

Become aware of the percentage of the world's population who live in urban settings and how they impact the environment.

Materials needed

10 sheets of paper on the floor, organised into 5 rows of two, which can be green or blue.
Tape to stick them to the floor.
10 'energy' cards.
10 'polluting gases' cards.



<https://youtu.be/WNQcqCbRPsk>

EXPLANATION OF ACTIVITY AND RULES

TIME

1. The class will 'represent' the world's population and the effects they have on the rest. To prepare the exercise:
Put 10 sheets of paper on the floor, organised into 5 rows of two. Stick them to the floor with tape.

5'

2. Ask students to stand up, but not to move from their spots yet.
Hand out the 10 'energy' cards and 10 'polluting gases' cards to all students.

5'

3. Start the game!
Ask half of the class to huddle together on three of the sheets of paper. The rest of the class stays where they are.

5'

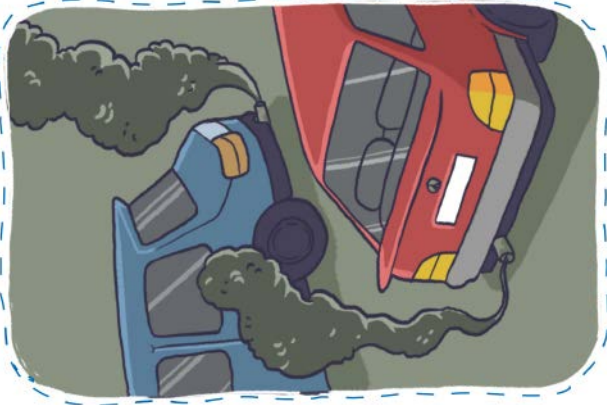
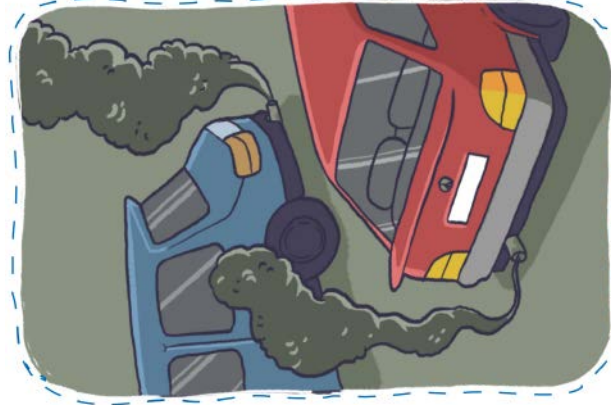
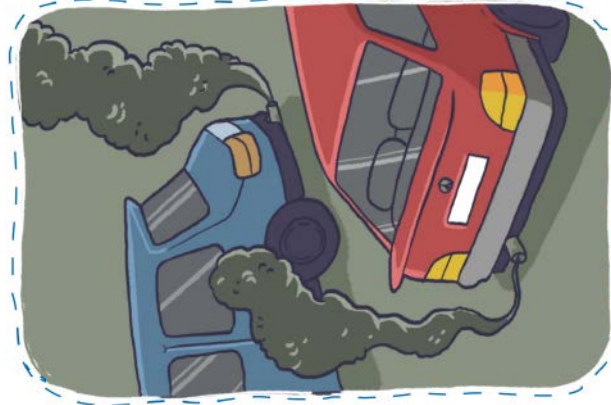
4. Reflection:
Tell them that this half of the class represents half of the world population and that, further, the half lives in cities that have only 3% of the inhabitable land on the Earth.

10'

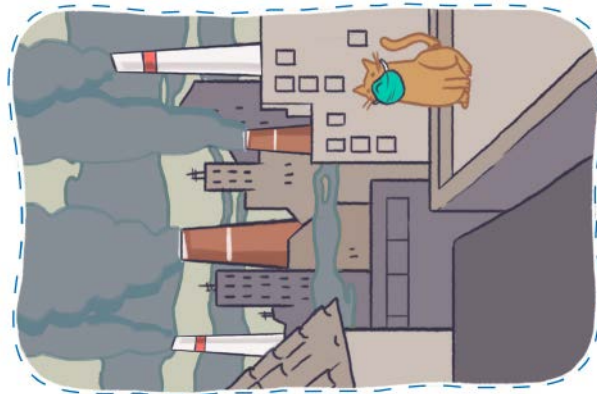
5. Reflection:
Now tell them that this 'urban' population consumes more energy and pollutes more than all the rest together: half of the class should ask the rest of their classmates for their 'energy' and 'gases' cards so that they end up with 7 cards of each type.
This lets them visualise how the urban population consumes, pollutes and uses all of the resources, while the rest has to be distributed and suffer the consequences.

20'

50% of the world's population lives in cities, which translates into some 3,500 million inhabitants. Cities occupy 3% of the Earth's area, consume 70% of total energy and concentrate 75% of the emissions of polluting gases.



Crop along the dotted line



Crop along the dotted line

